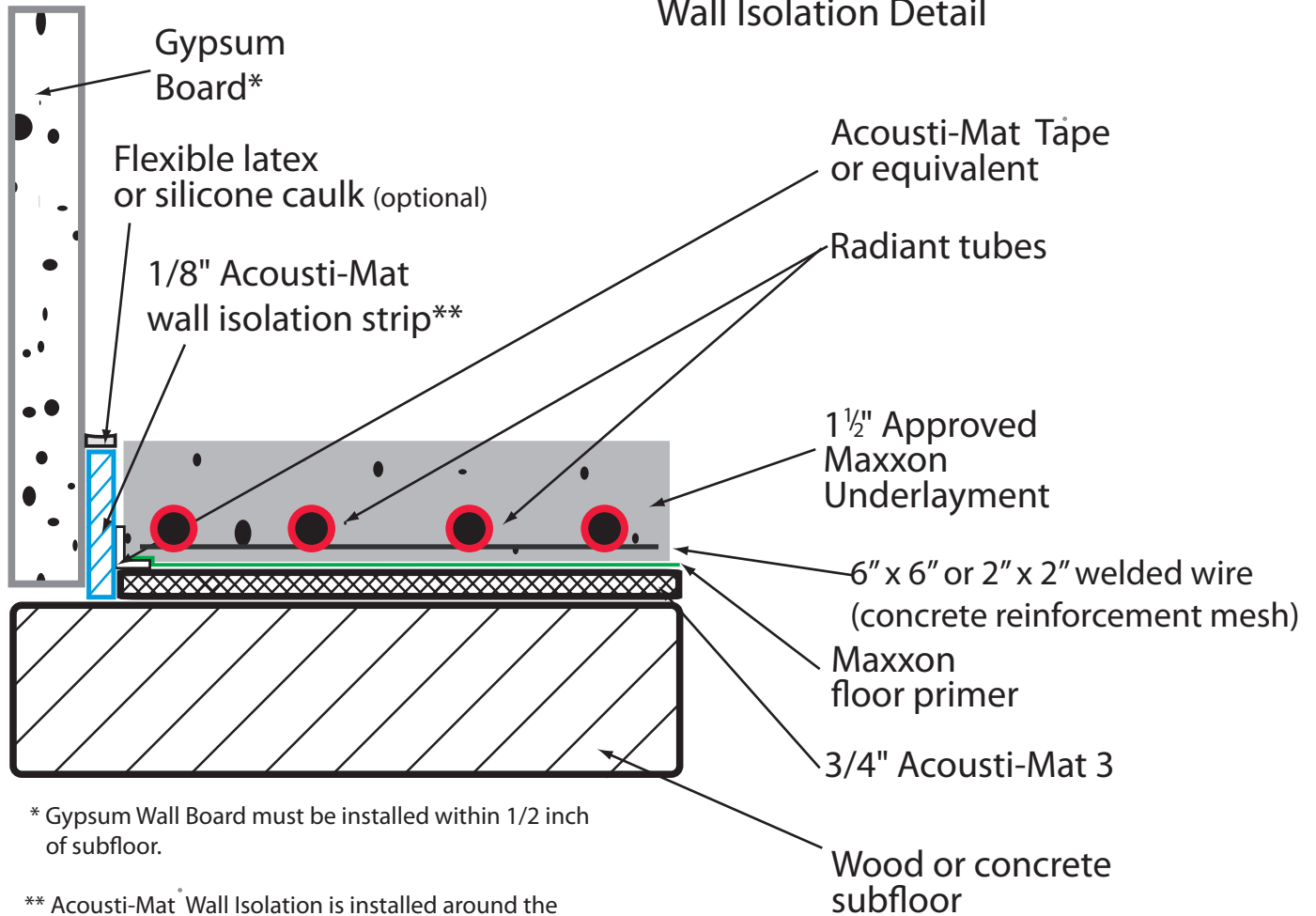


## Acousti-Mat 3 with Radiant Floor Heating and Welded Wire Wall Isolation Detail



\* Gypsum Wall Board must be installed within 1/2 inch of subfloor.

\*\* Acousti-Mat Wall Isolation is installed around the perimeter of the entire room to receive Acousti-Mat II, and around any floor penetrations such as toilet collars, electrical, plumbing, etc.

2D AM3-MXU-002